

MICHELANGELO

The science of art



EXHIBITION



HOSTING INQUIRIES

Please contact Merlan Exhibits:

Wol Przygocki | wol@merlanexhibits.com

General Manager, Merlan Exhibits



www.merlanexhibits.com



NICCOLAI TEKNOART
www.niccolaiteknoart.com

ARTISANS OF FLORENCE
www.artisansofflorence.com

I MURI DELL'ARTE
www.devitoantonio.it

THE DIVINE MICHELANGELO EXHIBITION

is the culmination of years of collaborative research and planning by Artisans of Florence, with the Niccolai Group and I Muri Dell'Arte Firenze .

The aim of the exhibition, the most complete ever presented on Michelangelo, is to provide visitors with an unparalleled experience, immersing them into the daily life of one of the greatest artists of the Italian Renaissance : a sculptor, a painter, an architect and a poet...

The exhibition format also gives the opportunity to include original drawings by Michelangelo from the Casa Buonarroti collection in Florence.

THE EXHIBITION THEMES

Theme 1

MICHELANGELO'S LIFE STORY
Michelangelo's biography, portraits, public and private facts about his life and personality.



Theme 2

A RENAISSANCE WORKSHOP
Michelangelo's apprenticeship, a young artist in a Renaissance workshop : featuring typical situations reconstructed with wooden furniture and antique materials.



Theme 3

SCULPTURE
Featuring life size statues directly obtained from the precious original casts made at the end of the 19th century.



Theme 4

ARCHITECTURE
Featuring drawings, video animations, and pictures in a suggestive scenery.



Theme 5

THE CHALLENGE OF THE BATTLES
A clash of Titans : two Battles scenes and the contest between Leonardo and Michelangelo.



Theme 6

THE SISTINE CHAPEL FRESCOES
Featuring an introduction to fresco technique, and full-size frescoes after details of Sistine Chapel, made with the same technique and materials used by Michelangelo.



Theme 7

MICHELANGELO'S ORIGINAL DRAWINGS
Thanks to our partnership with Fond. Casa Buonarroti, the exhibition offers the opportunity to include original drawings from the Casa Buonarroti collection in Florence.



MICHELANGELO'S LIFE STORY



Angels from
“Madonna of Manchester”
after Michelangelo
(fresco by A. De Vito)
cm 194 x 110

Portrait of Michelangelo Buonarroti
by Iacopino del Conte
(print on canvas) cm 98 x 68



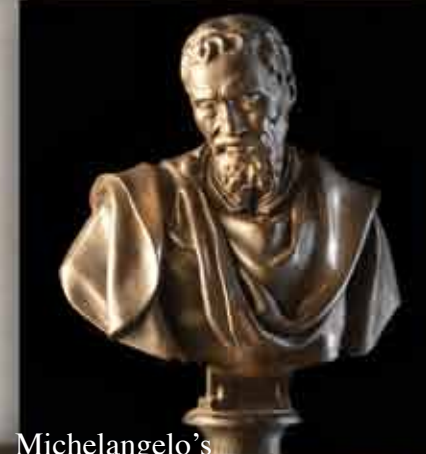
Michelangelo's statue (print) cm 120 x 200



Drawings on antiqued paper after Michelangelo



Michelangelo's first painting
(tempera on wood, by A De Vito)
cm 35 x 47



Michelangelo's
bust by Daniele da Volterra
(from original cast)cm 79 x 63



St Bartholomew
from Sistine Chapel
(print) cm 190 x 126



Michelangelo's life story room

A RENAISSANCE WORKSHOP



Featuring typical situations of the bottega, reconstructed with wooden furniture and antique materials .

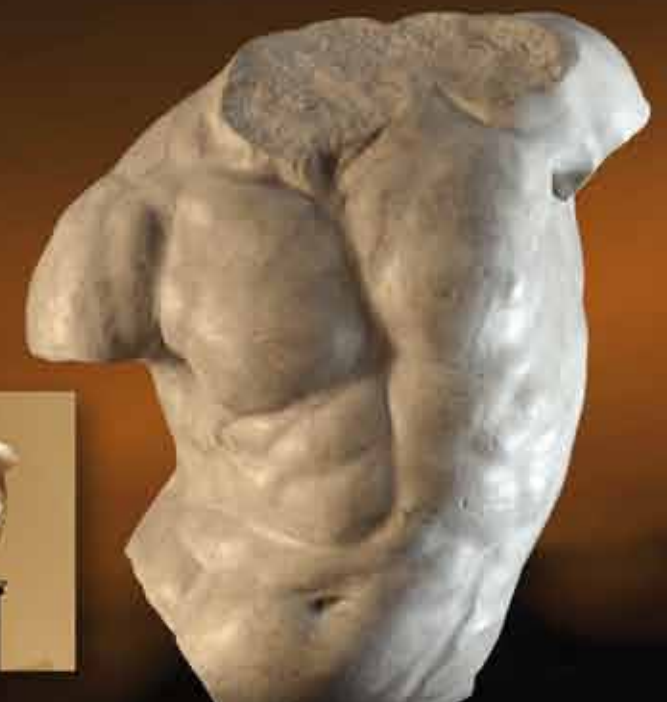


The artist's cabinet.

Drawing from life with a Renaissance dressed model



Study of drapery



Clay modelling copying the Torso Gaddi (after original cast) cm 85x65x35



Copy after great masters
(Madonna and St Ann after Leonardo)



Alberti's veil

Golden leaf gilding technique



The painter's workshop
(print) Cm 190 x 210



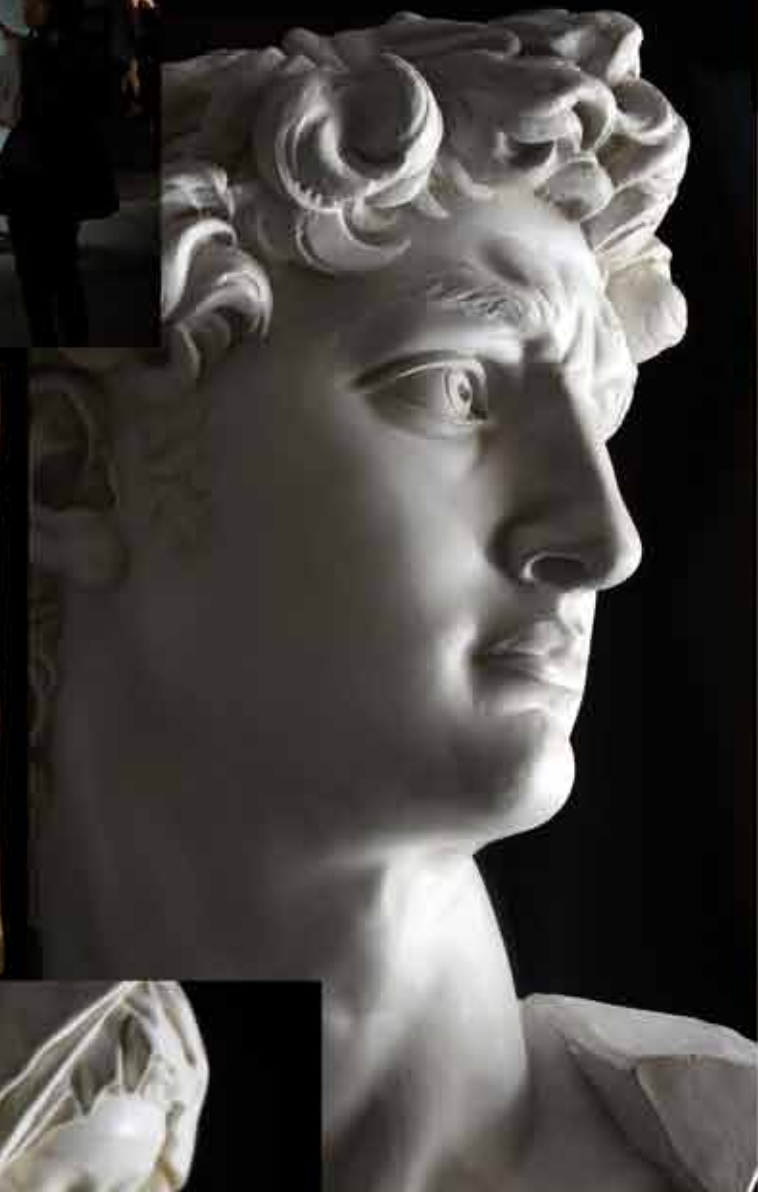
The painter's tools and materials

SCULPTURE

Life size statues directly obtained from the precious original casts made at the end of the 19th century.



The Battle of Centaurs cm 85 x 90 x 20



Head of David cm 110 x 90 x 80



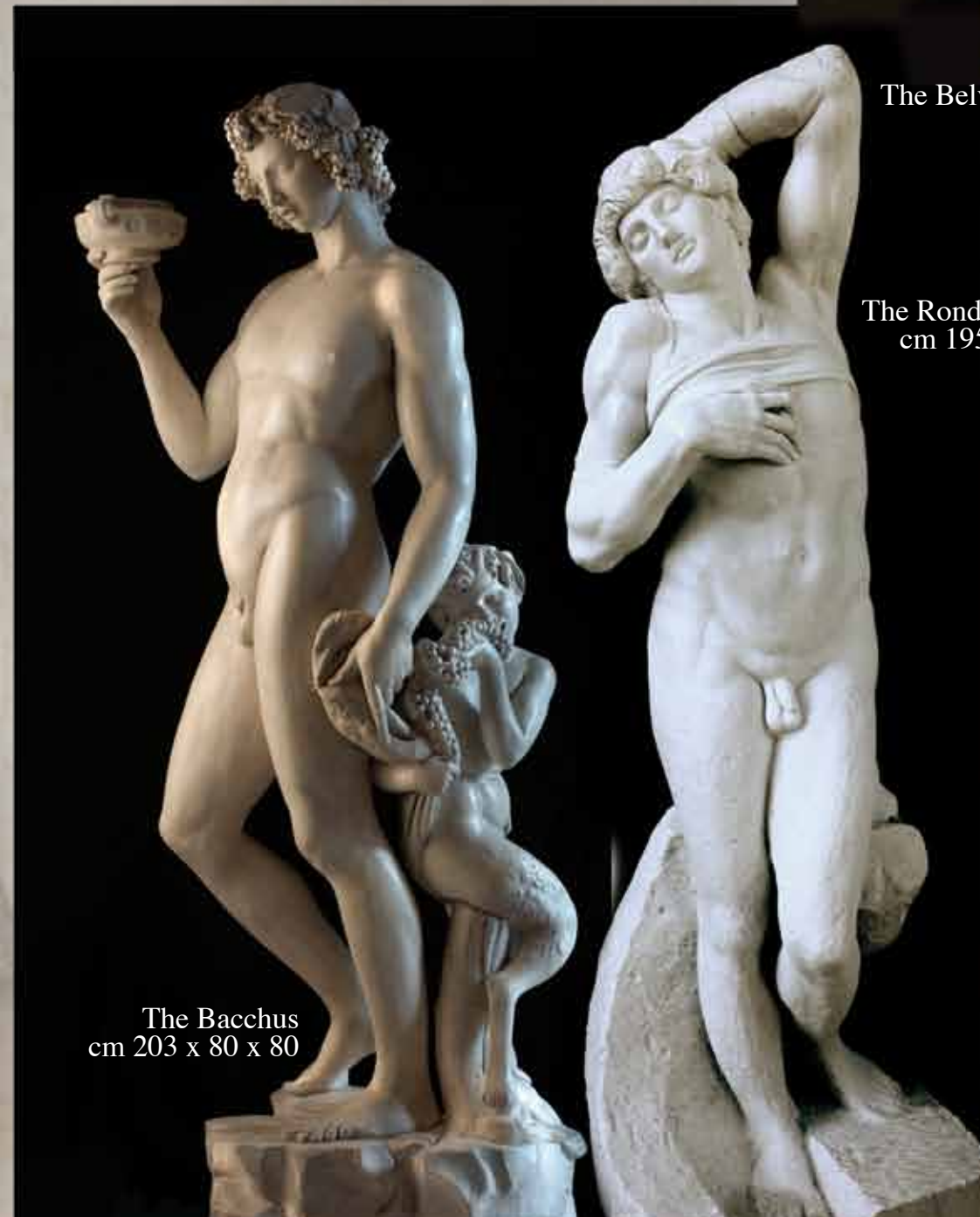
The Rome pietà cm 174 x 195 x 100



The Madonna of the Stairs cm 56 x 40 x 15



The Belvedere Torso cm 160 x 115 x 100



The Bacchus
cm 203 x 80 x 80



The Rondanini Pietà
cm 195 x 72 x 80

The Dying Slave (work-in-progress Carrara Marble) cm 229 x 80 x 70

ARCHITECTURE



The architecture room, with giant panel of St Peter's Dome cross-section (print) m 300 x 190

Drawings for architectural projects. (print) cm 120x200



Videos animation of architectural projects

Michelangelo shows the Model for St Peter to the Pope (print) Cm 120 x 200

Michelangelo's architectural projects and still existing buildings (prints) cm 120 x 200 each

THE CHALLENGE OF THE BATTLES



Cartoon for the Battle of Cascina (reconstruction on antique paper and linen) cm 360 x 280

Story line of the Battles
(print) cm 900 x 80



Cartoon for the
Battle of Anghiari
(reconstruction, oil on paper)
cm 260 x 183



Battle of Anghiari
after Leonardo da Vinci (detached fresco) cm 260 x 183



The Battles room, the contest between Leonardo and Michelangelo

Drawings for Battle of Anghiari, by Leonardo da Vinci,
and sketches for Battle of Cascina
after Michelangelo



THE SISTINE CHAPEL FRESCOS

Nine full-size frescoes after details of Sistine Chapel, made by Antonio De Vito, with the same technique and materials used by Michelangelo .



Christ from Last Judgment (detached fresco) Cm 185 x 210



Videos of the creation of a fresco



Creation of Adam (detached fresco) Cm 250 x 130



The frescos room



Ignudo above the Cumanean Sybil (detached fresco) Cm 120 x 115

THE DAVID

From a cast of the original statue by Michelangelo. Cm 515 (without stand)



Many scholars have observed that when sculptors copy a sculpture, they invariably introduce modifications, whereas a plaster cast taken directly from the original is the most faithful possible duplication of its volumes and form. The only surviving casts of Michelangelo's work, like other great sculptures of the world, are those made in the 19th century.

In fact, in 1865 the Italian Ministry of Education banned the practice of casts making from the originals, for conservation purposes. Therefore the casts and dies made before that date are an important patrimony of the world of art and they are the base of origin of all the casts presented in this exhibition.

MICHELANGELO'S ORIGINAL DRAWINGS

The artworks on loan are from the "Fondazione Casa Buonarroti" collection. They include figure drawings, architectural sketches, letters and poems by Michelangelo.

The originals room

MICHELANGELO'S ORIGINAL DRAWINGS



The artworks on loan are from the “Fondazione Casa Buonarroti” collection. They include figure drawings, architectural sketches, letters and poems by Michelangelo.

The originals room

MICHELANGELO'S ORIGINAL DRAWINGS

The artworks on loan are from the "Fondazione Casa Buonarroti" collection. They include figure drawings, architectural sketches, letters and poems by Michelangelo.

The originals room

Flakes of gray stone shot out to the rhythmic beat of mallets. The clang of metal on metal, answered by the dry sound of splitting rock cradled the infant's sleep... The smell of stone dust that crept in houses and in quarry workers' clothes even mixed with the milk the baby sucked from his nurse's breast. This smell, sweet to him, and the rhythmic music of mallets accompanied the young Michelangelo all along his childhood years, together with the awareness of the beauty hidden in rough stone. Michelangelo Buonarroti was the greatest sculptor of all time. Shaping the cold stone he gave life to figures of ideal beauty, endowed with an almost supernatural power of expression. The whole of his sculpture work was enough to let him pass into the legend of Art, but Michelangelo did more: he also created colossal works of very different genres of art. His paintings cover the immensity of the vault and altar wall of the Sistine Chapel, still taking viewers' breath away, and the graceful majesty of the enormous dome of St. Peter sends shiver down bystanders' spine. He was born divine sculptor, and he quickly became a painter of unrivalled power of expression for his time, and then architect of magnificent constructions, and finally poet ...

His artistic fertility and genius could not but give him a place of honour in Art History.

Between reality and myth, everyday life and artistic greatness, let's recall moments of Michelangelo's life, and, through the study of all of his major works, let's find out who

was

"The Divine Michelangelo".





“The true work of art is but a shadow of the divine perfection”
Michelangelo Buonarroti

HOSTING INQUIRIES

Please contact Merlan Exhibits:
Wol Przygocki | wol@merlanexhibits.com
General Manager, Merlan Exhibits



www.merlanexhibits.com